



TEST REPORT

Applicant: ShenZhen WangBao Electronics Co.,Ltd
Address: 402C room 2 building B Shenzhen District of Longgang city center city
 Huangge road Tianan Digital City

The following sample(s) was/were submitted and identified on behalf of the client as:

Product name: 2.8TFT Module
Model: 2.8TFT Module, 3.2TFT Module, 3.5TFT Module, 4.3TFT Module
Trade mark: Openmcu

Sample Received Date: Aug. 20, 2015
Testing Period: Aug. 20, 2015~ Aug. 28, 2015

Test Requirement:

As specified by client, to screen Lead(Pb), Cadmium(Cd), Mercury(Hg), Chromium(Cr) and Bromine(Br) in the submitted sample(s) by XRF. When screening results exceed the XRF screening limit in IEC62321-3-1: 2013, further use of chemical methods are required to test the Lead(Pb), Cadmium(Cd), Mercury(Hg), Hexavalent Chromium(Cr(VI)), Polybrominated Biphenyls(PBBs) and Polybrominated Diphenyl Ethers(PBDEs) in the submitted samples in accordance with ROHS directive 2011/65/EU.

Conclusion:

Pass

Test Result(s): Please refer to the following page(s);

Test Method: Please refer to the following page(s);

Tested by Frank

Reviewed by: Cathy

Approved by: Maria Lisa

Date: 2015-08-28 * 

Shenzhen NTEK Testing Technology Co., Ltd.

Address: 1/F, Building E, Fenda Science Park, Sanwei Community, Xixiang Street, Bao'an District, Shenzhen P.R. China.
 Tel: (86)-0755-61156588 Fax: (86)-0755-61156599 Http: www.ntek.org.cn



Test Result(s):

1. PCB

Sample No.	Sample Description	Tested Items	XRF Screening Test	Chemical Test (mg/kg)	Conclusion
1	PCB	Pb	OL	41	PASS
		Cd	BL	/	
		Hg	BL	/	
		Cr(Cr(VI))	BL	/	
		Br(PBBs&PBDEs)	IN	N.D.	
2	U3 Chip	Pb	BL	/	PASS
		Cd	BL	/	
		Hg	BL	/	
		Cr(Cr(VI))	BL	/	
		Br(PBBs&PBDEs)	IN	N.D.	
3	C2 SMD capacitor	Pb	BL	/	PASS
		Cd	BL	/	
		Hg	BL	/	
		Cr(Cr(VI))	BL	/	
		Br(PBBs&PBDEs)	BL	/	
4	U1 Chip	Pb	BL	/	PASS
		Cd	BL	/	
		Hg	BL	/	
		Cr(Cr(VI))	BL	/	
		Br(PBBs&PBDEs)	BL	/	
5	R3 SMD resistor	Pb	BL	/	PASS
		Cd	BL	/	
		Hg	BL	/	
		Cr(Cr(VI))	BL	/	
		Br(PBBs&PBDEs)	BL	/	
6	Q1 SMD audion	Pb	BL	/	PASS
		Cd	BL	/	
		Hg	BL	/	
		Cr(Cr(VI))	BL	/	
		Br(PBBs&PBDEs)	BL	/	
7	Silvery metal shell of card slot	Pb	OL	332	PASS
		Cd	BL	/	
		Hg	BL	/	
		Cr(Cr(VI))	BL	/	
		Br(PBBs&PBDEs)	/	/	

Shenzhen NTEK Testing Technology Co., Ltd.

Address: 1/F, Building E, Fenda Science Park, Sanwei Community, Xixiang Street, Bao'an District, Shenzhen P.R. China.
 Tel: (86)-0755-61156588 Fax: (86)-0755-61156599 Http: www.ntek.org.cn



8	White plastic of card slot	Pb	BL	/	PASS
		Cd	BL	/	
		Hg	BL	/	
		Cr(Cr(VI))	BL	/	
		Br(PBBs&PBDEs)	BL	/	
9	Metal contact sheet of card slot	Pb	BL	/	PASS
		Cd	BL	/	
		Hg	BL	/	
		Cr(Cr(VI))	BL	/	
		Br(PBBs&PBDEs)	/	/	
10	Black plastic of black slot	Pb	BL	/	PASS
		Cd	BL	/	
		Hg	BL	/	
		Cr(Cr(VI))	BL	/	
		Br(PBBs&PBDEs)	BL	/	
11	Metal contact pin of black slot	Pb	OL	26110 ^{#1}	PASS
		Cd	BL	/	
		Hg	BL	/	
		Cr(Cr(VI))	BL	/	
		Br(PBBs&PBDEs)	/	/	
12	Glass display screen	Pb	BL	/	PASS
		Cd	BL	/	
		Hg	BL	/	
		Cr(Cr(VI))	BL	/	
		Br(PBBs&PBDEs)	BL	/	
13	Glass screen of screen	Pb	BL	/	PASS
		Cd	BL	/	
		Hg	BL	/	
		Cr(Cr(VI))	BL	/	
		Br(PBBs&PBDEs)	BL	/	
14	Silvery metal plate of screen	Pb	BL	/	PASS
		Cd	BL	/	
		Hg	BL	/	
		Cr(Cr(VI))	IN	Negative	
		Br(PBBs&PBDEs)	/	/	
15	White plastic frame of screen	Pb	BL	/	PASS
		Cd	BL	/	
		Hg	BL	/	
		Cr(Cr(VI))	BL	/	
		Br(PBBs&PBDEs)	BL	/	

Shenzhen NTEK Testing Technology Co., Ltd.

Address: 1/F, Building E, Fenda Science Park, Sanwei Community, Xixiang Street, Bao'an District, Shenzhen P.R. China.
 Tel: (86)-0755-61156588 Fax: (86)-0755-61156599 Http: www.ntek.org.cn

16	White plastic sheet of screen	Pb	BL	/	PASS
		Cd	BL	/	
		Hg	BL	/	
		Cr(Cr(VI))	BL	/	
		Br(PBBs&PBDEs)	BL	/	
17	Transparent plastic of screen	Pb	BL	/	PASS
		Cd	BL	/	
		Hg	BL	/	
		Cr(Cr(VI))	BL	/	
		Br(PBBs&PBDEs)	BL	/	
18	Frosted white plastic of screen	Pb	BL	/	PASS
		Cd	BL	/	
		Hg	BL	/	
		Cr(Cr(VI))	BL	/	
		Br(PBBs&PBDEs)	BL	/	
19	Silvery plastic sheet of screen	Pb	BL	/	PASS
		Cd	BL	/	
		Hg	BL	/	
		Cr(Cr(VI))	BL	/	
		Br(PBBs&PBDEs)	BL	/	
20	Black glue of screen	Pb	BL	/	PASS
		Cd	BL	/	
		Hg	BL	/	
		Cr(Cr(VI))	BL	/	
		Br(PBBs&PBDEs)	BL	/	
21	LED of screen	Pb	BL	/	PASS
		Cd	BL	/	
		Hg	BL	/	
		Cr(Cr(VI))	BL	/	
		Br(PBBs&PBDEs)	BL	/	
22	FPC of screen	Pb	BL	/	PASS
		Cd	BL	/	
		Hg	BL	/	
		Cr(Cr(VI))	BL	/	
		Br(PBBs&PBDEs)	BL	/	
23	Yellow adhesive tape of screen	Pb	BL	/	PASS
		Cd	BL	/	
		Hg	BL	/	
		Cr(Cr(VI))	BL	/	
		Br(PBBs&PBDEs)	BL	/	

Shenzhen NTEK Testing Technology Co., Ltd.

 Address: 1/F, Building E, Fenda Science Park, Sanwei Community, Xixiang Street, Bao'an District, Shenzhen P.R. China.
 Tel: (86)-0755-61156588 Fax: (86)-0755-61156599 Http: www.ntek.org.cn



24	Black adhesive tape of screen	Pb	BL	/	PASS
		Cd	BL	/	
		Hg	BL	/	
		Cr(Cr(VI))	BL	/	
		Br(PBBs&PBDEs)	BL	/	
25	Transparent sticking film	Pb	BL	/	PASS
		Cd	BL	/	
		Hg	BL	/	
		Cr(Cr(VI))	BL	/	
		Br(PBBs&PBDEs)	BL	/	

2. XT280374PK-A FPC

Sample No.	Sample Description	Tested Items	XRF Screening Test	Chemical Test (mg/kg)	Conclusion
26	FPC	Pb	BL	/	PASS
		Cd	BL	/	
		Hg	BL	/	
		Cr(Cr(VI))	BL	/	
		Br(PBBs&PBDEs)	BL	/	
27	SMD resistor	Pb	BL	/	PASS
		Cd	BL	/	
		Hg	BL	/	
		Cr(Cr(VI))	BL	/	
		Br(PBBs&PBDEs)	BL	/	
28	SMD capacitor	Pb	BL	/	PASS
		Cd	BL	/	
		Hg	BL	/	
		Cr(Cr(VI))	BL	/	
		Br(PBBs&PBDEs)	BL	/	
29	SMD diode	Pb	BL	/	PASS
		Cd	BL	/	
		Hg	BL	/	
		Cr(Cr(VI))	BL	/	
		Br(PBBs&PBDEs)	BL	/	

Shenzhen NTEK Testing Technology Co., Ltd.

Address: 1/F, Building E, Fenda Science Park, Sanwei Community, Xixiang Street, Bao'an District, Shenzhen P.R. China.
 Tel: (86)-0755-61156588 Fax: (86)-0755-61156599 Http: www.ntek.org.cn



- Note:
- N.D. = Not Detected (<MDL)
 - MDL = Method Detection Limit
 - mg/kg = ppm = parts per million
 - /=Not Regulated or Not Applicable
 - BL = Under the XRF screening limit
 - IN = Further chemical test will be conducted when the screening result inconclusive
 - OL = Further chemical test will be conducted while the result is above the screening limit.
 - Negative = Absence of Cr(VI) , the detected Cr(VI) concentration in the boiling water extraction solution is less than 0.02 mg/kg with 50cm² sample surface area used.
 - Positive = Presence of Cr(VI), the detected Cr(VI) concentration in the boiling water extraction solution is equal to or greater than 0.02 mg/kg with 50cm² sample surface area used.

- Remark:
- 1.The screening results are only used for reference.
 - 2.When conducting the test for PBBs&PBDEs, XRF was introduced to screen Br Exclusively; When conducting the test for Hexavalent Chromium, XRF was introduced to screen Chromium exclusively.
 - 3.According to directive 2011/65/EU and 2011/534/EU.
- #1 Lead is exempted as copper alloy containing up to 4% lead by weight

Test Method:

1. Screening test by XRF spectroscopy

XRF screening limits in mg/kg for regulated elements according to IEC 62321-3-1:2013

Element	Limit of IEC 62321-3-1:2013 (unit:mg/kg)		MDL	
	Polymers and metals	Composite material	Polymers	Other material
Pb	BL≤(700-3σ) <X <(1300+3σ)≤OL	BL≤(500-3σ)<X <(1500+3σ)≤OL	10 mg/kg	50 mg/kg
Cd	BL≤(70-3σ)<X <(130+3σ) ≤OL	LOD <X<(150+3σ)≤OL	10 mg/kg	50 mg/kg
Hg	BL≤(700-3σ)<X <(1300+3σ)≤OL	BL≤(500-3σ)<X <(1500+3σ)≤OL	10 mg/kg	50 mg/kg
Cr	BL≤(700-3σ)< X	BL≤(500-3σ)< X	10 mg/kg	50 mg/kg
Br	BL≤(300-3σ)< X	BL≤(250-3σ)< X	10 mg/kg	50 mg/kg

Note: -BL = Under the XRF screening limit

-OL = Further chemical test will be conducted while result is above the screening limit.

-X= The symbol "X" marks the region where further investigation is necessary.

-3σ= The reproducibility of analytical instruments

-LOD= Detection limit

2. Chemical Test

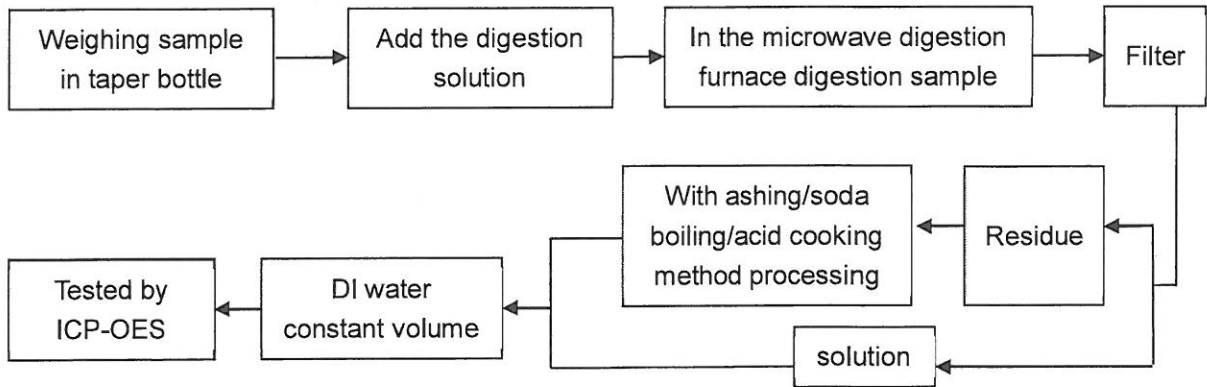
Test item	Pretreatment method	Test instrument	MDL
Lead(Pb)	IEC 62321-5:2013 Ed.1.0	ICP-OES	2 mg/kg
Cadmium(Cd)	IEC 62321-5:2013 Ed.1.0	ICP-OES	2 mg/kg
Mercury(Hg)	IEC 62321-4:2013 Ed.1.0	ICP-OES	2 mg/kg
Chromium(Cr VI)	IEC 62321:2008 Ed.1	UV-Vis	2 mg/kg
PBBs/ PBDEs	IEC 62321-6:2015 Ed.1	GC-MS	5 mg/kg

Shenzhen NTEK Testing Technology Co., Ltd.

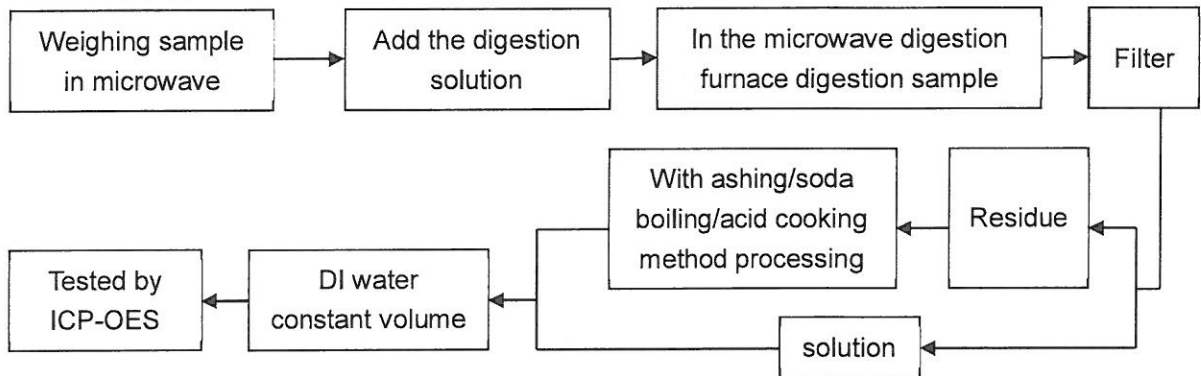
 Address: 1/F, Building E, Fenda Science Park, Sanwei Community, Xixiang Street, Bao'an District, Shenzhen P.R. China.
 Tel: (86)-0755-61156588 Fax: (86)-0755-61156599 Http: www.ntek.org.cn

Test Flow:

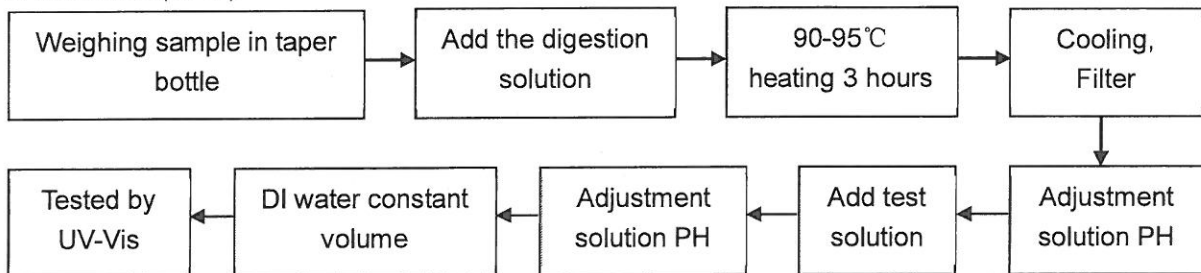
1. Lead(Pb), Cadmium(Cd)



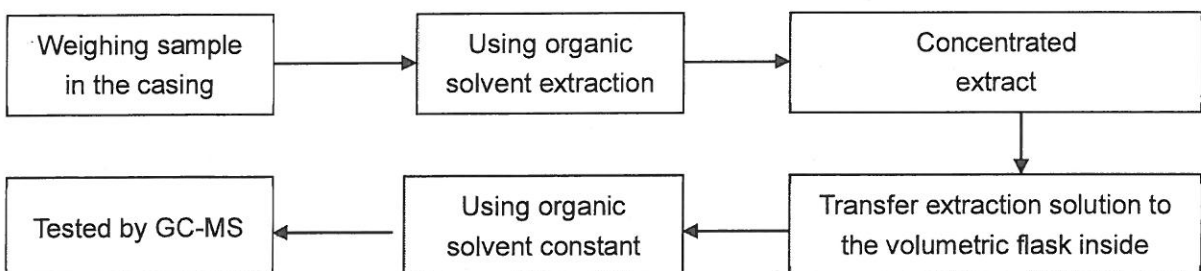
2. Mercury (Hg)



3. Chromium(Cr VI)



4. PBBs/ PBDEs



Shenzhen NTEK Testing Technology Co., Ltd.

Address: 1/F, Building E, Fenda Science Park, Sanwei Community, Xixiang Street, Bao'an District, Shenzhen P.R. China.
 Tel: (86)-0755-61156588 Fax: (86)-0755-61156599 Http: www.ntek.org.cn

Sample photo(s):

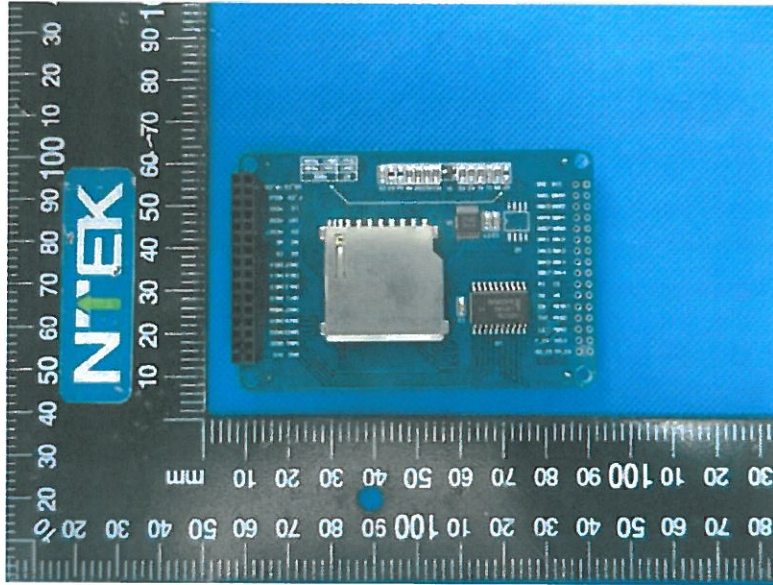


Fig.1

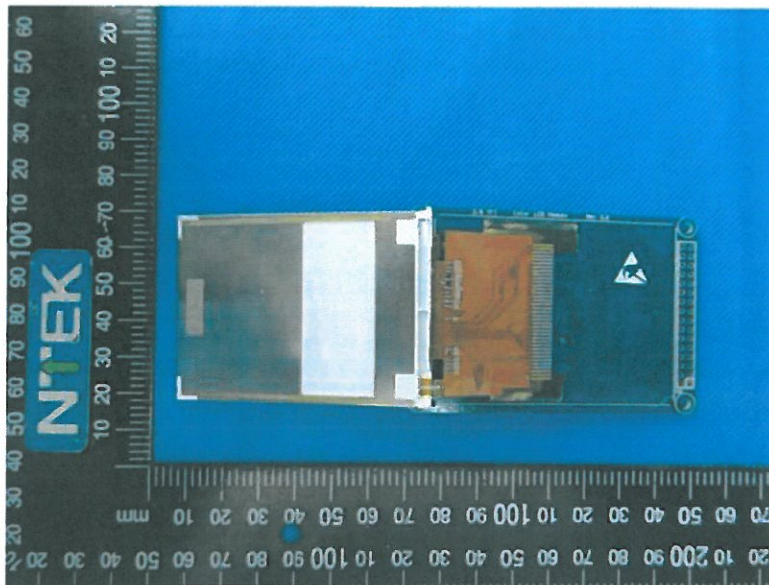


Fig.2

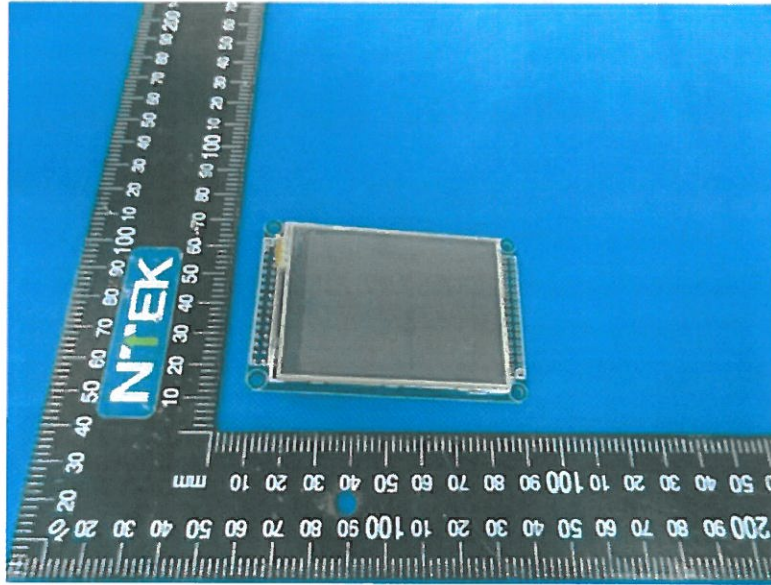


Fig.3

****End of Report****

The test report is effective only with both signature and specialized stamp, The result(s) shown in this report refer only to the sample(s) tested. Without written approval of NTEK, this report can't be reproduced except in full.